

SPEED RAIL™



THE TRAIN OF TOMORROW . . . THE WORLD'S FASTEST

INSTRUCTIONS FOR ASSEMBLY, OPERATION AND SERVICE OF NO. 7133 SUPER PASSENGER AND NO. 7134 SUPER FREIGHT SETS

The first thing to do after you have unpacked your Speedrail set is to check that you have all the needed parts. When checking, learn the part names so that you can follow the instructions. Your set should contain the following parts:

TRACK AND TRESTLE PARTS

- 10 sections of straight track
- 10 sections of curved track
- 1 bag of 40 brass track clips
- 12 3-hole braces
- 4 2-hole braces
- 5 "G" stanchions (vertical supports)
- 3 "A" stanchions
- 2 "B" stanchions
- 3 "C" stanchions
- 2 "D" stanchions
- 3 "H" stanchions
- 1 "F" stanchion
- 6 brace connectors
- 5 stanchion stubs
- 1 tunnel top
- 1 tunnel bottom
- 4 tunnel clamp tops
- 4 tunnel clamp bottoms
- 18 rubber feet (in the bags with track clips)
- 11 screw-down stanchion bases
- 1 tri-level assembly (2 parts)

POWER SUPPLY PARTS

- 1 power pack
- 2 connecting wires (with spade lugs and connectors)
- 1 power pack front support
- 1 power pack rear support
- 2 power pack holders

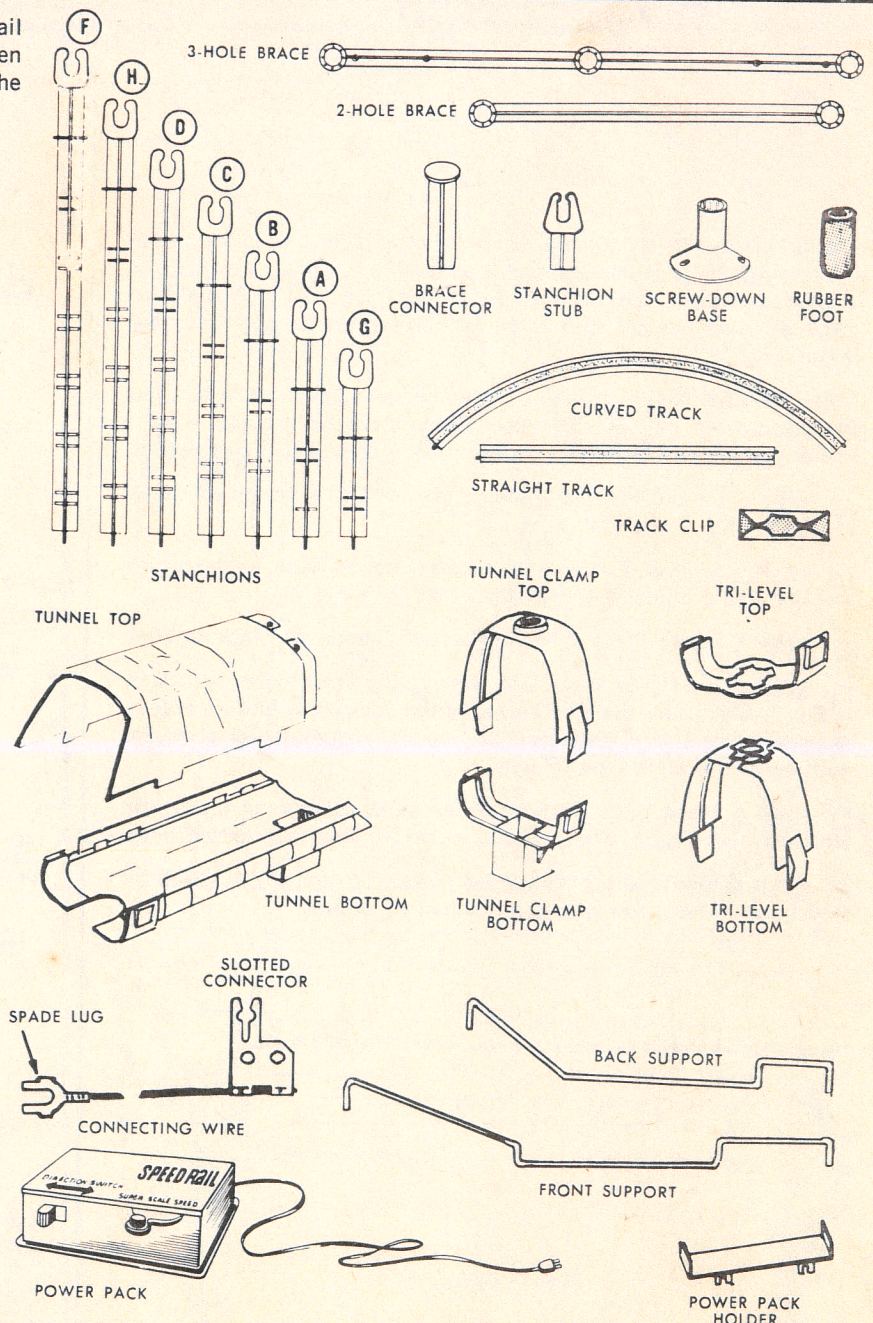
ROLLING STOCK AND STATIONS

Passenger Set includes:

- 1 locomotive
- 2 passenger cars
- 1 observation car
- 1 set of decorative strips
- 1 passenger station

Freight Set includes:

- 1 locomotive
- 1 box car
- 1 car carrier with car
- 1 log carrier with log
- 1 set of decorative strips
- 1 set of freight station parts



TRESTLE AND TRACK

Assembling a Speedrail layout is a bit tricky but can be as much or more fun than running the train itself. The track is supported by a trestle built up of the vertical posts or "stanchions" and 2-hole and 3-hole cross braces. The braces are arranged in several layers (4 in the case of your layout) so that the brace holes match. Then they are "pinned" together by the stanchions that slide into the holes. Push a stanchion through a hole in the brace to see how they fit. If the stanchion seems to be too tight, do not force it in but scrape the edges to make it fit more freely. See Fig. 1. Let an adult help you with this part of the job.

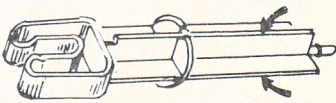
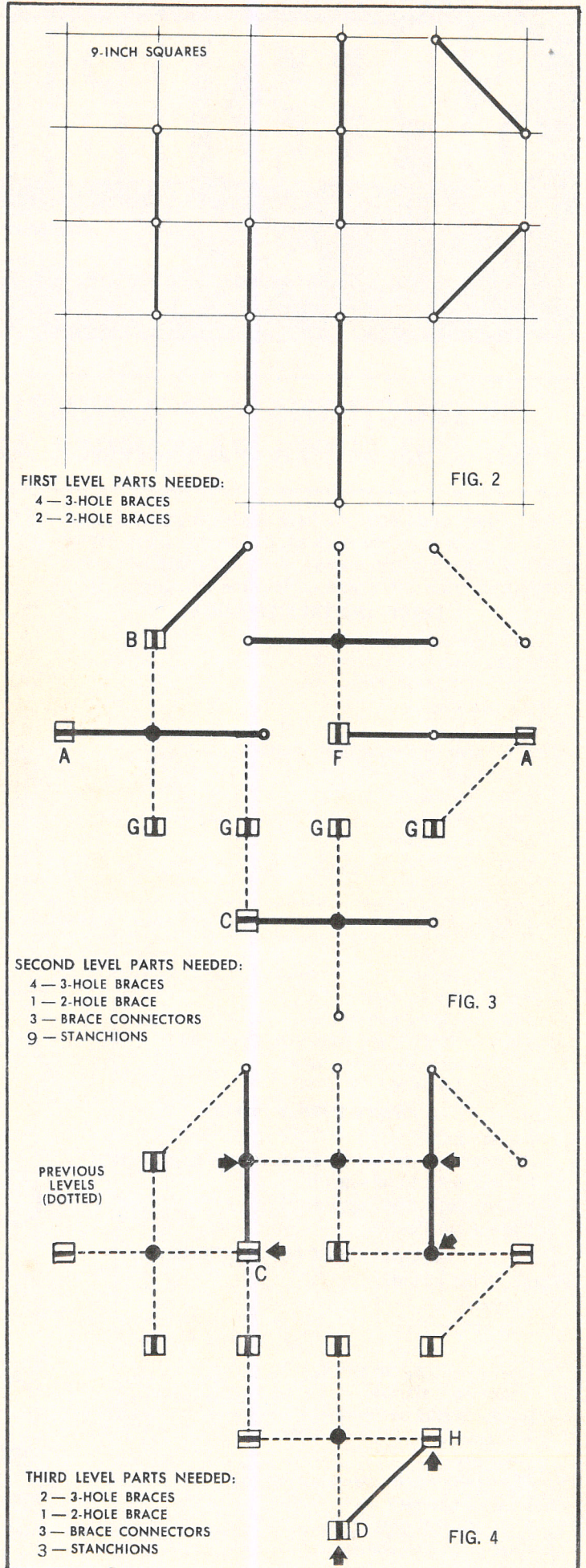


FIG. 1

The easiest way to lay out the pattern of cross braces is to use a real or an imaginary grid (checkerboard) consisting of 9-inch squares (the distance between holes of a 3-hole brace.) See Fig. 2. A tile floor made of 9-inch square tiles is an excellent place to assemble your layout.

There are many different ways to assemble your Speedrail layout, but the step-by-step method described below is the fastest and easiest. Follow the steps in order and check off each step as you complete it.

- STEP 1.** Lay out four 3-hole braces and two 2-hole braces, as shown in Fig. 2. This is the first layer.
- STEP 2.** Arrange the second level of braces (four 3-hole braces and one 2-hole brace) over the first level. (See Fig. 3)
- STEP 3.** Insert the 3 brace connectors (shown as black circles).
- STEP 4.** Insert the stanchions through the brace holes, as shown in Fig. 3. Make sure the slots on top of the stanchions line up exactly as shown. The size of the stanchion tops is exaggerated to show the position of the slots more clearly.
- STEP 5.** Place the third level of braces in position on the trestle structure. See Fig. 4. The previous levels are shown as dotted lines.
- STEP 6.** Now insert 3 more brace connectors and the 3 additional stanchions. These new pieces are shown by arrows.



□ **STEP 7.** Add the fourth level which consists of just one 3-hole brace. See Fig. 5.

□ **STEP 8.** Insert the last 4 stanchions (shown by arrows). Now all of your braces and stanchions are in place.

□ **STEP 9.** Install 4 tunnel clamp bottoms over the stanchion tops, as shown in Fig. 5. (Except for Passenger Station—see Step 10.)

□ **STEP 10.** Install the bottoms of the station and the tunnel. If you have a freight set follow the diagram in Fig. 5. If you have a passenger set do not use the tunnel clamp bottom on the end of the station. The passenger station has its own built-in tunnel clamp bottom.

□ **STEP 11.** Now you are ready to assemble the track. The first thing to do is to insert the track clips into the track sections. Fit a brass track clip into one of the holes at the end of a section of track. See Fig. 6. Press the end of the clip firmly against a hard surface until the clip slides into the hole as far as it will go. Repeat with another clip in the second hole.

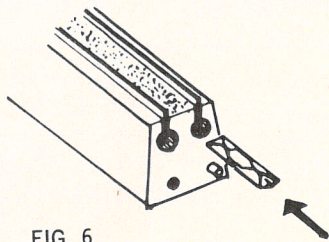


FIG. 6

On straight track, it doesn't matter in which end you put the clips as long as they are both in the same end. On curved track it makes a difference—can you tell why? If you keep putting the clips in the same end of curved sections you will end up with a complete circle. For layouts where the curves change direction, some of the curved sections will need to have clips in the opposite end. In your set 7 will be one way, 3 the other.

□ **STEP 12.** To assemble the track to the trestle, start with two straight track sections. Push the two track sections together so that the clips at the end of one slip into the holes in the other. Then fit the track joint into the slot on top of a stanchion and press down until the track snaps all the way in. (See Figs. 7A and 7B) Assemble the track to the stanchions in sequence shown in Fig. 8.

□ **STEP 13.** Finish assembling the station that comes with your set. See the separate instruction sheet furnished with the station.

FIG. 5

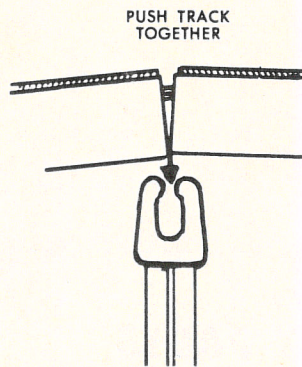
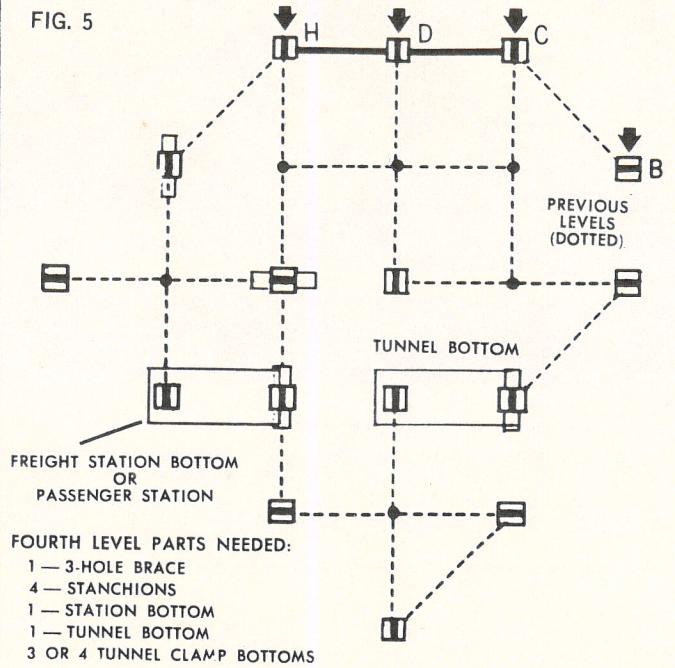


FIG. 7 A

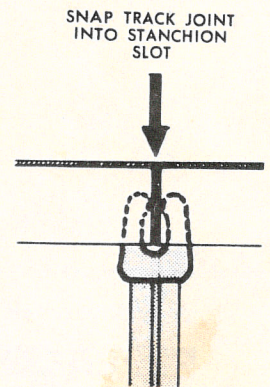


FIG. 7 B

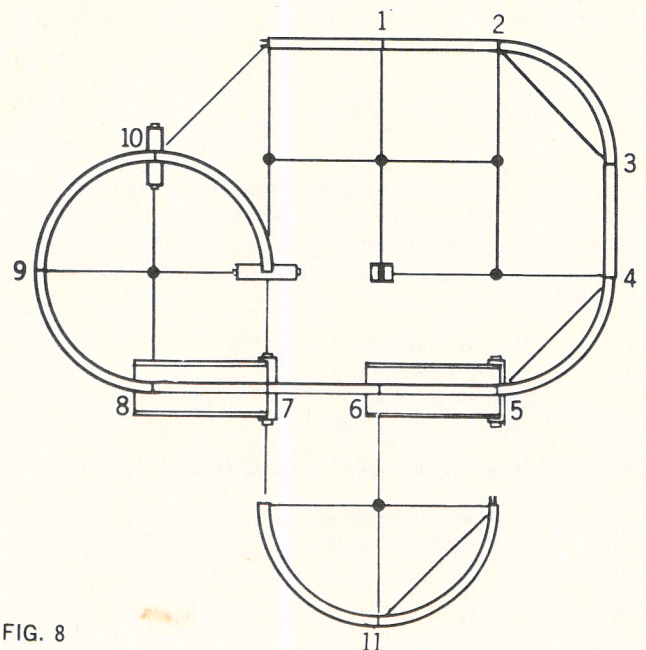


FIG. 8